

TR90cn-1,5

ACTR915C



Ratio
Rapporto
1: 1,5 speeder



RPM OUTPUT
Velocità
8.000 min⁻¹



Max. axial load
Max. carico assiale
350 N



Torque
Momento torcente
15 Nm

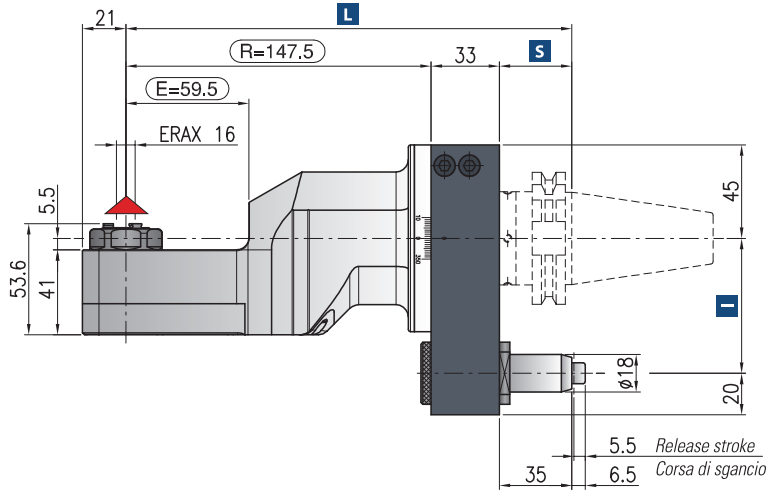
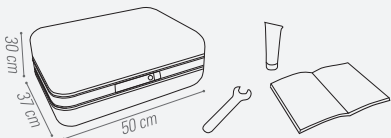


Weight
Peso
7 kg

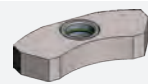
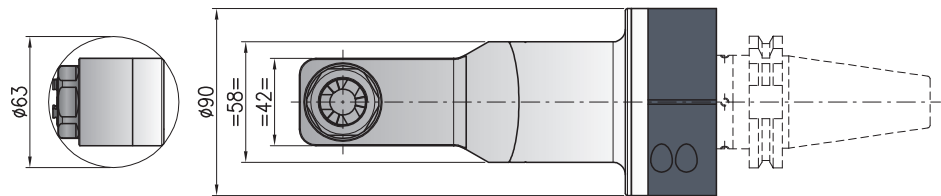


Collet
Pinza
ER-AX 16 (ø1/10 mm)

* STANDARD EQUIPMENT INCLUDES:



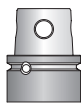
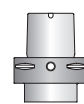
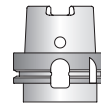
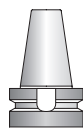
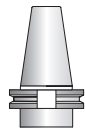
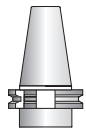
Minimum diameter without tool
Diametro minimo senza utensile



Retaining block / Tassello di ritengo / Stop-Block
NOT INCLUDED - NON INCLUSO

Dry running also possible / Rotazione a secco possibile

▲ Direction of rotation opposite to machine spindle / senso di rotazione contrario al mandrino



Shank/Cono	DIN-69871	CAT	MAS-BT	HSK	CAPTO	KM			
Size/Grandezza	40	50	40	50	63-80	100	C5-C6	C8	63
I	65-80	80-(110*)	65-80-(110*)	80-(110*)	65-80-(110*)	80-(110*)	65-80-(110*)	80-(110*)	65-80-(110*)
S	35	35	35	41	42	45	38	40	40
L	215,5	215,5	215,5	221,5	222,5	222,5	218,5	220,5	220,5

Dual contact spindles available/Disponibilità coni a doppio contatto

*optional

Non interchangeable input drive shank/ Coni di attacco non intercambiabili

Option / Opzione



bar max
12

Coolant through pin
Refrigerante attraverso il perno



bar max
100

Coolant through spindle
Refrigerante attraverso il cono